

FRIEZE LONDON

October 15–19, 2025

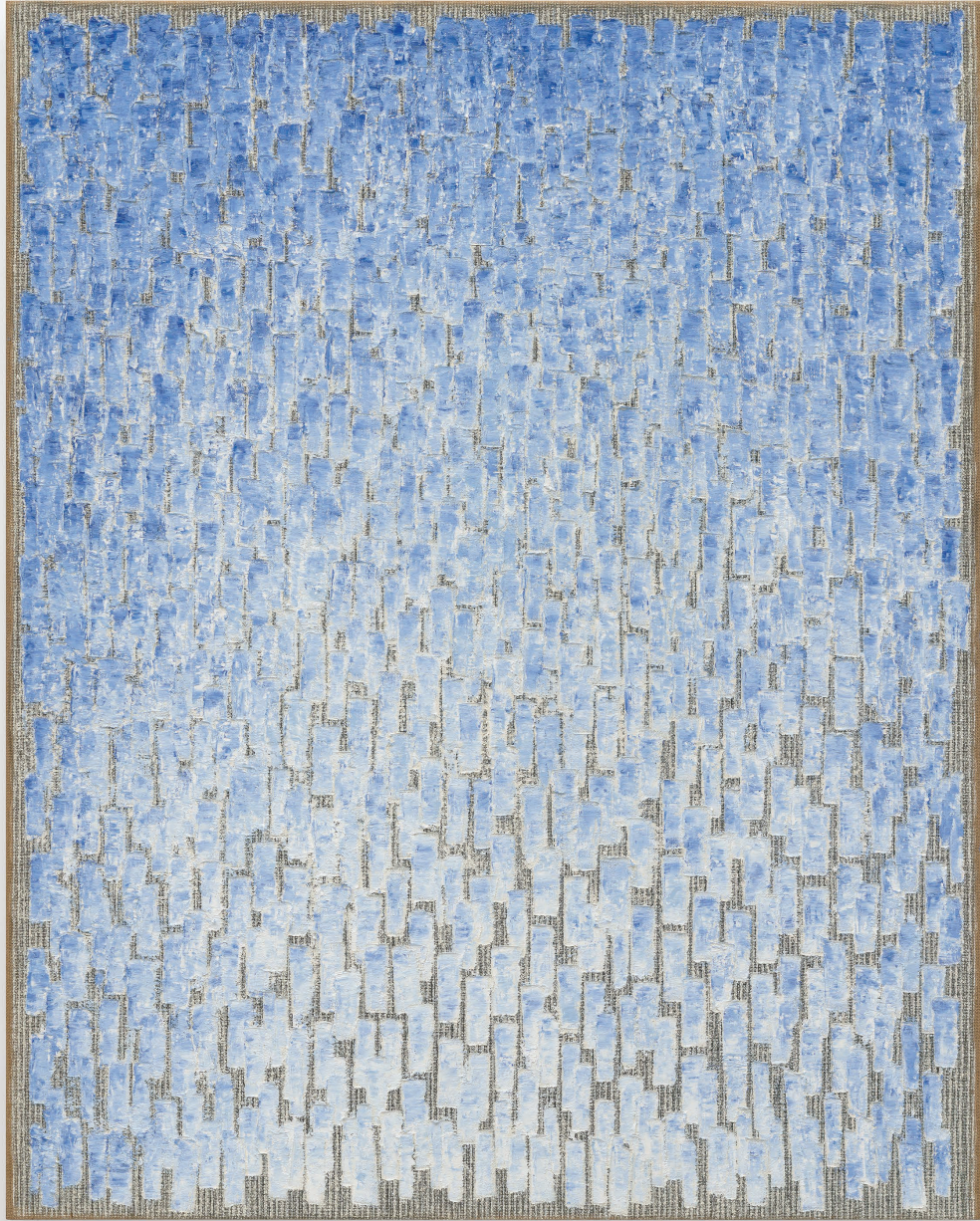
The Regent's Park
Booth C18

TINA KIM GALLERY

Works by

Pacita Abad
Ghada Amer
Ha Chong-Hyun
Suki Seokyeong Kang
Kim Tschang-Yeul
Kwon Young-Woo
Maia Ruth Lee
Mire Lee
Lee ShinJa
Park Seo-Bo
Tania Pérez Córdova
Kibong Rhee

Ha Chong-Hyun

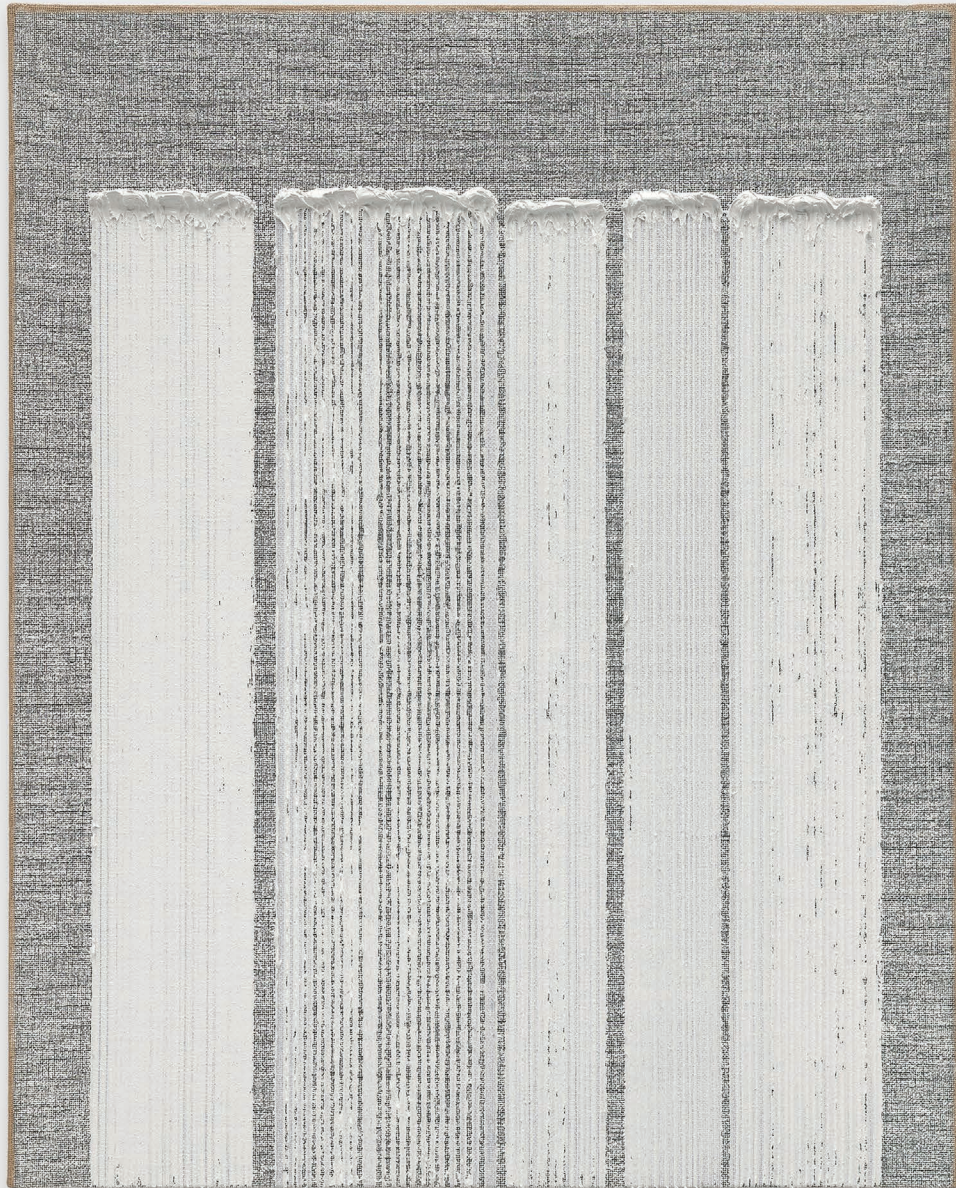


Conjunction 22-66, 2022

Oil on hemp cloth
89 $\frac{3}{8}$ x 71 $\frac{5}{8}$ in
227 x 182 cm

TINA KIM GALLERY

Ha Chong-Hyun

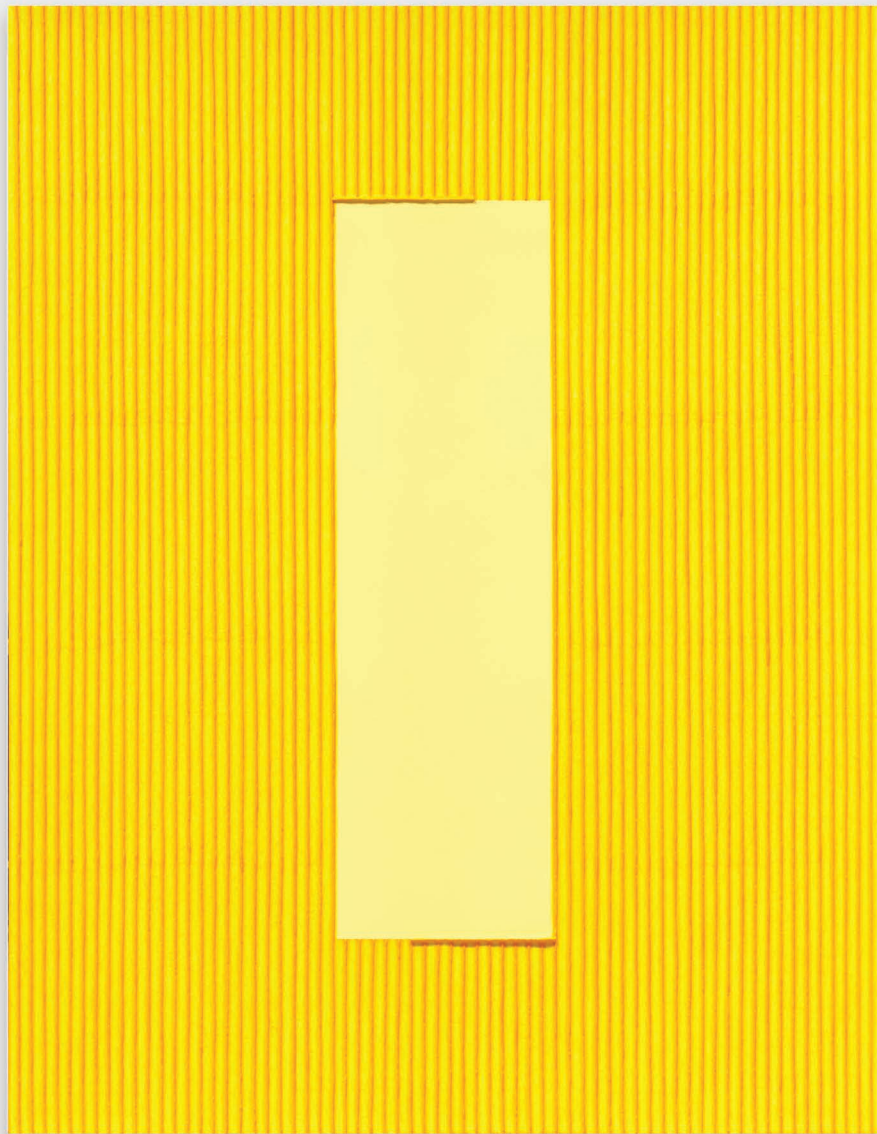


Conjunction 23-77, 2023

Oil on hemp cloth
63¾ x 51⅞ in
162 x 130 cm

TINA KIM GALLERY

Park Seo-Bo



Ecriture No. 080628, 2008

Mixed media with Korean Hanji paper on canvas

57 $\frac{1}{8}$ x 44 $\frac{1}{8}$ in

145 x 112 cm

TINA KIM GALLERY

Kim Tschang-Yeul



Waterdrops, 1979

Oil, acrylic, and tinfix on canvas
36¼ x 28¾ in
92 x 73 cm

TINA KIM GALLERY

Kwon Young-Woo



Untitled, 1980s

Korean paper
53 $\frac{1}{8}$ x 42 $\frac{1}{2}$ in
134.9 x 108 cm
(Framed)

TINA KIM GALLERY

Kwon Young-Woo



Untitled, 1987

Gouache and Chinese ink on Korean paper

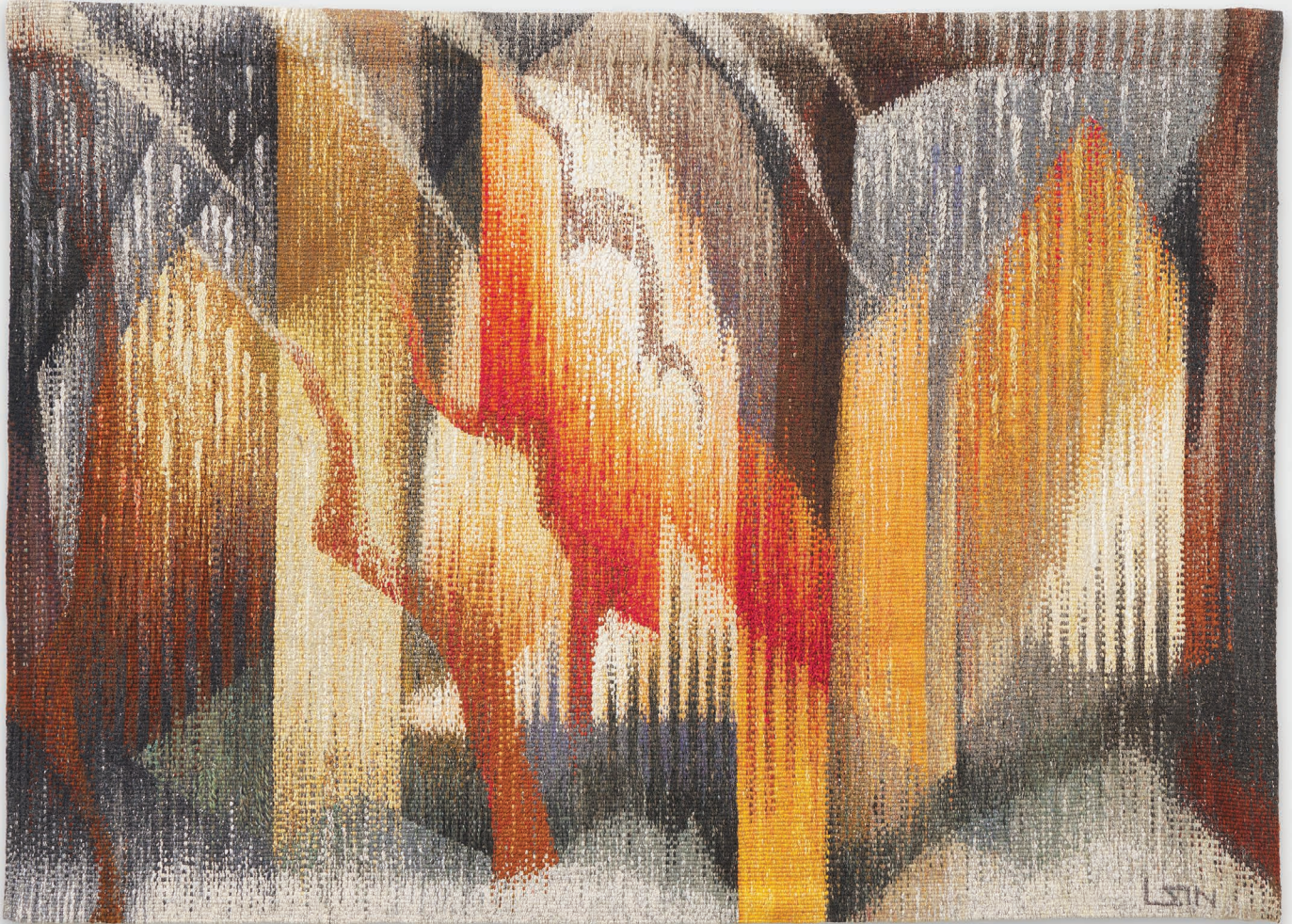
41 x 33½ in

104.1 x 85.1 cm

(Framed)

TINA KIM GALLERY

Lee ShinJa



The Spirit of Forest, 1986

Wool, synthetic thread; tapestry

58 $\frac{1}{8}$ x 80 $\frac{3}{4}$ in

147.7 x 205.1 cm

TINA KIM GALLERY

Lee ShinJa



Growth, 1980s

Wool thread; tapestry

53 x 44 in

134.6 x 111.8 cm

TINA KIM GALLERY

Suki Seokyeong Kang



Mountain — five #23-01, 2022-2023

Painted steel, chain, brass, thread, woven
dyed Hwamunseok, wood, rope, wheels
Dimensions variable

TINA KIM GALLERY

Suki Seokyeong Kang



Jeong — step #15, 2023-2024

Color on silk mounted on Korean Hanji paper,
thread, wood frame

43¼ x 31½ in

110 x 80 cm

TINA KIM GALLERY

Kibong Rhee



We Are the Misty – Section A, 2025

Acrylic and polyester fiber on canvas

47 x 79 $\frac{1}{8}$ in

119.4 x 201 cm

TINA KIM GALLERY

Kibong Rhee



너무 먼 장소에 관한 A (About places too far A), 2025

Acrylic and polyester fiber on canvas

42 $\frac{1}{8}$ x 42 $\frac{1}{8}$ in

107 x 107 cm

TINA KIM GALLERY

Maia Ruth Lee



B.B. Lattice 1-7, 2025

Ink on canvas

59 x 61 in

149.9 x 154.9 cm

TINA KIM GALLERY

Maia Ruth Lee



B.B. Salida 1, 2025

Acrylic ink on canvas
57½ x 60¼ in
146.1 x 153 cm
(Framed)

TINA KIM GALLERY

Mire Lee



Tentacle from Open Wound 1, 2024

Silicon, wire, rope
192 x 27.5 x 5 in
487.2 x 70 x 13 cm

TINA KIM GALLERY

Mire Lee



*Black Sun: Surface with many
holes—#21, 2023*

Fabric and clay slip
50 $\frac{1}{8}$ x 39 $\frac{7}{8}$ in
127.3 x 101.3 cm
(Framed)

TINA KIM GALLERY

Tania Pérez Córdova



Colocasia Black Coral, 2022

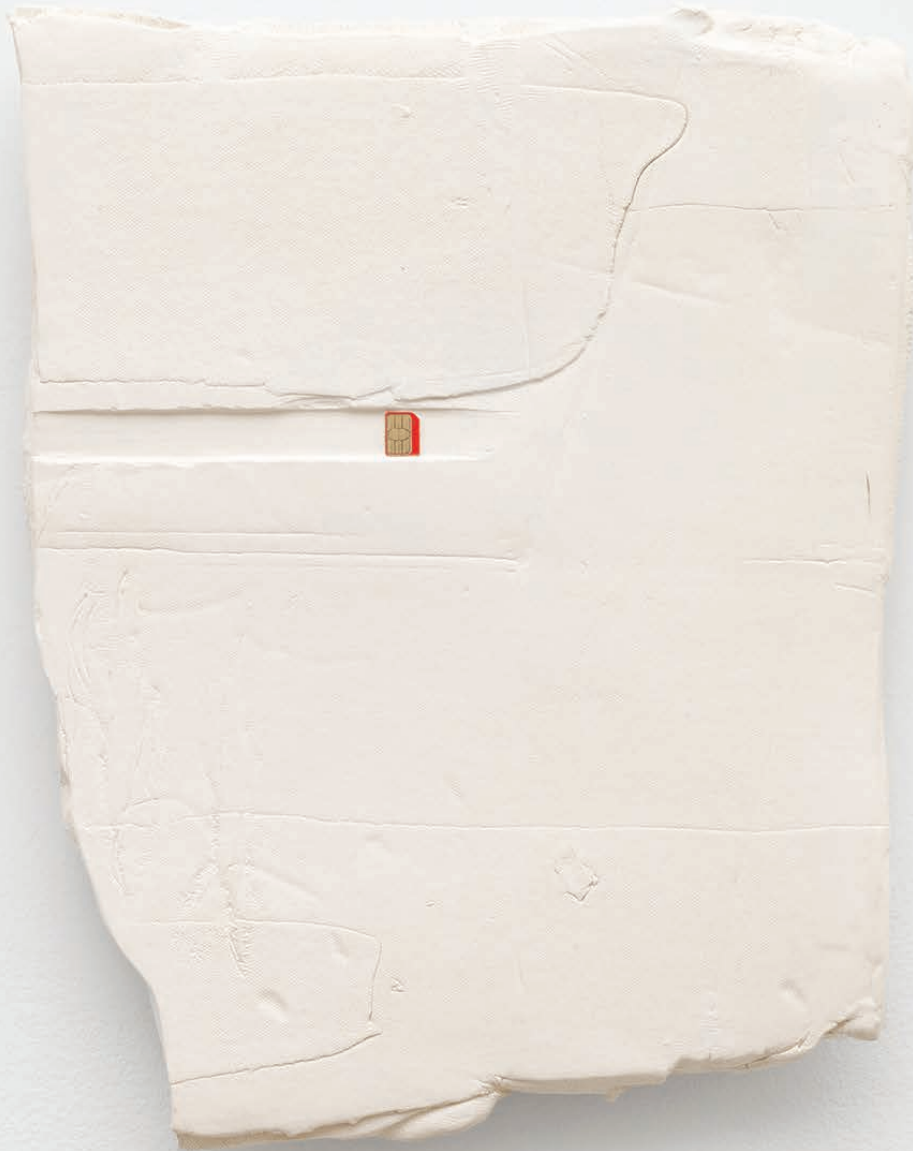
Artificial plant, silver chain, Mexican peso coin,
and iron structure

33 $\frac{7}{8}$ x 11 in

86 x 27.9 cm

TINA KIM GALLERY

Tania Pérez Córdova



On hold, 2014

Ceramic, borrowed sim card

15½ x 12¼ x ⅝ in

39.5 x 31 x 1.7 cm

TINA KIM GALLERY

Ghada Amer



*A Woman's Voice (in Blue) —
A Woman's Voice is Revolution, 2023*

Cotton appliqué on canvas
33½ x 33½ in
85.1 x 85.1 cm

Pacita Abad



Twenty-five meters down on Layag-Layag Reef,
1986

Oil, acrylic, buttons, and cotton yarn
on stitched and padded canvas
54¼ x 56¼ in
137.8 x 142.9 x 5.1 cm
(Framed)

SALES INQUIRIES

inquiries@tinakimgallery.com | +1 (212) 716-1100

© Tina Kim Gallery 2025

TINA KIM GALLERY

525 West 21st Street, New York, NY 10011